



the magnet[®]
dynamic surfaces



&



—exterpark[®]

Arguably best decking system available
with two patented innovations

“Great things are done by a series
of small things brought together”

Vincent Van Gogh





INTRODUCTION

Our Company, **Yvyra**, manufactures indoor and outdoor wood floors for 45 years with a firm commitment to:

quality
reliability
innovation

Our floors have been embraced in all kinds of projects in more than 60 countries worldwide, featuring collaborations with internationally known architects such as Frank Gehry, Jean Nouvel, Santiago Calatrava and Norman Foster.

R+D+I tradition experience know-how

Stimulates us to improve our products and find better solutions to be one step ahead

1995 - We invented and patented the first hidden fastening system clip for decks, named **Exterpark Classic**.

This has become today the standard fixing system for most producers worldwide. No more screws on the surface.

2004 - Our profile evolved with a subtle modification. The **invisible profile** for decking was born and patented.

The understructure was not visible, loss of valuables was no longer a concern and our decks became safer and cleaner for the users. Our most spread technology for the time being, enjoyed all around the world.

2012 - Was the launching of our third patented innovation. **SpeedClip** was our first contribution to making installation easier, screw-less, definitely faster and cost-efficient.

Innovation award 2016
**Innovations@
DOMOTEX**

Recognition to innovation,
sustainability and design 2017
**B Barcelona
Building
Construmat**
supervised by:
**fundació
mies van der rohe
barcelona**

Our best creation arrived in late **2014**.

The Magnet is the best system we have ever developed.

A system that works for virtually any kind of surface featuring multiple virtues:

versatility total accessibility reusability

EFFECT 1

INVISIBLE
PROFILE

STANDARD PROFILE WITH OPEN GAPS
VS EXTERPARK INVISIBLE PROFILE

-exterpark



Our Invisible patented profile provides several advantages

Better Look: no gaps and no visible understructure

Hygienic: no food or other objects can fall down

No loss of valuables: coins, rings or keys

Safer: nothing can get stuck such as high heels or fingers

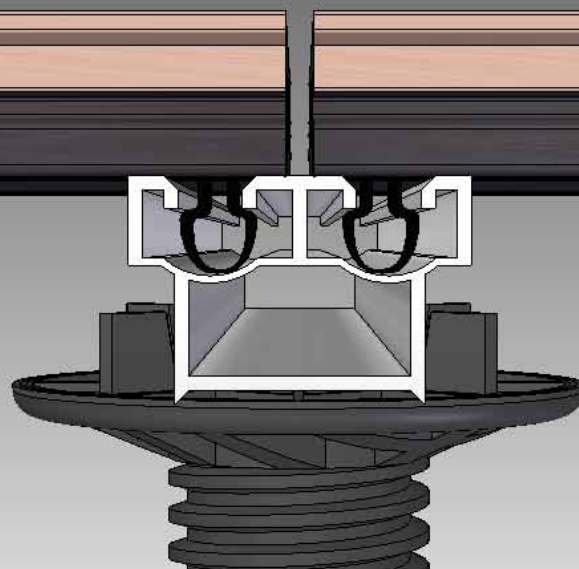


EFFECT 2

ASSEMBLY
the magnet®

INSTALLATION BENEFITS

An advanced **mechanical locking** with superior grip which holds boards stronger than a screw but yet flexible to open up and close again if necessary



EASY No screws

FAST No predrilling

SILENT No tools

COST-EFFICIENT





TOTAL ACCESS FOR DECKS AND WALLS



accessibility
maintenance friendly
easy substitution of boards



CONCERNED
FOR THE
PLANET

the magnet®

THINKING **GREEN**



enlarged service life
relocation possibilities

reusable

Commitment with the environment



We manufacture using sustainable sources such as FSC certified wood.

Furthermore Exterpark Magnet features certain characteristics that provide credits for the green LEED building certification.



THE MAGNET SYSTEM WORKS OVER 6 ESSENTIAL ELEMENTS:

A special **groove** at the bottom of each board to allocate magnet clips

Aluminum joists with a very specific and accurate geometry for the magnet clip to click inside

Spacers between boards to leave 4mm invisible expansion and drainage gap

Blocking units to keep all boards always in same place and prevent longitudinal movement

Levelling instruments such as **pedestals** and **wedges**



A COMPLETE
SYSTEM

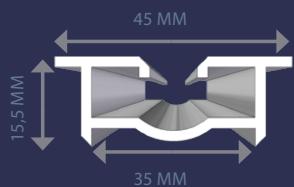
the magnet®

The **Magnet clip** is the corner stone of the system. The key is the strength with the right flexibility. Fully made of POM, a high performance engineering thermoplastic with excellent dimensional stability even at extreme conditions. Strong yet flexible, low friction coefficient and high abrasion resistance.

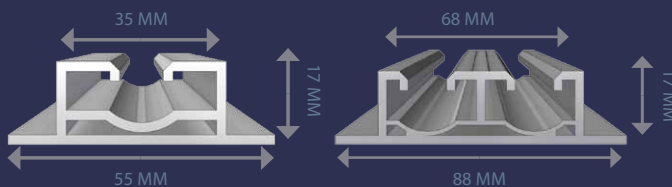
ALUMINUM JOISTS: A SOLID ROCK FOUNDATION

All scenarios - Building it forever

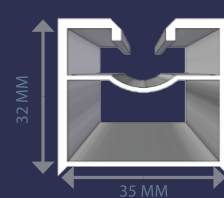
LOW HEIGHT



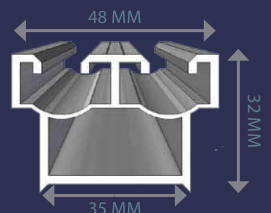
WALLS AND CEILINGS



SINGLE



DOUBLE



Improved loading capacity to more than 4000kgs per m2

Superior mechanical properties to hold clips

Upgraded Stability: will remain straight, it won't warp nor decay

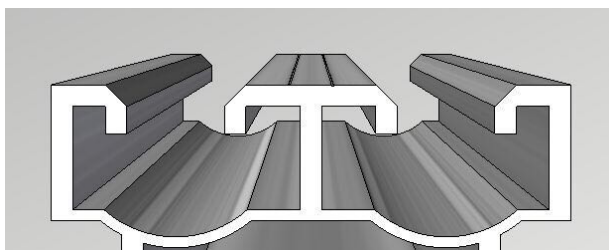
Enlarged service life

Save costs and time by using less pedestals every 50 or 60cm

Fixed lengths of 2200mm

Details

Comprehensive
system with
complete
solutions



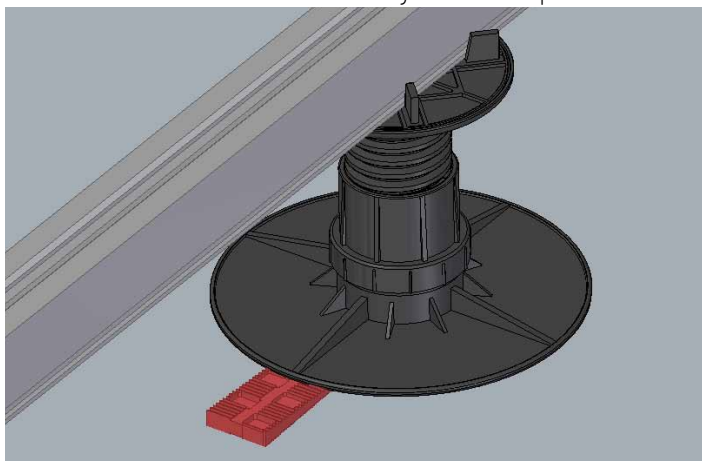
We have created the double click joist for the short-end connections, which is a must for the good performance of the product. There is even a 4mm spacing mark for the indicative recommended expansion gap essential for Exterpark Tech.



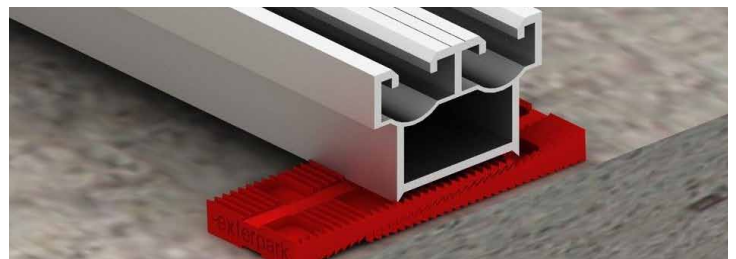
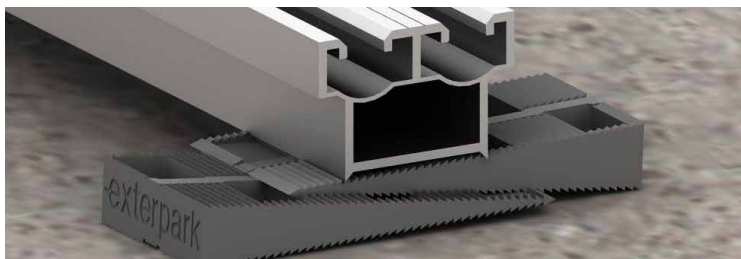
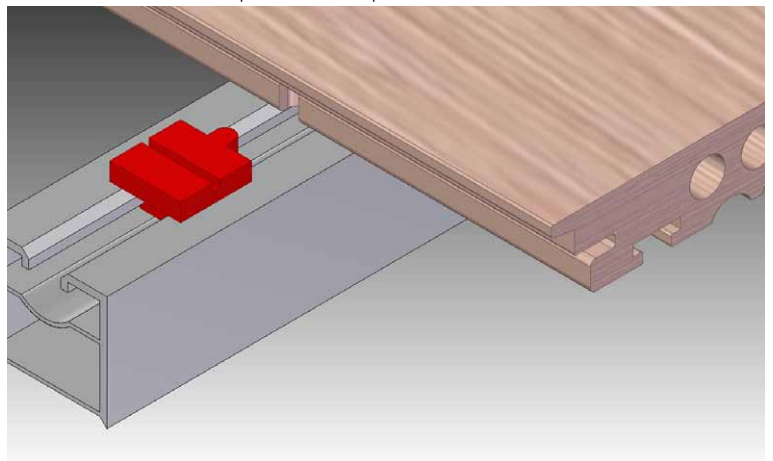
COMPREHENSIVE SYSTEM

Instruments

Levelling wedges and height adjustable pedestals.



Blocking spacer to prevent longitudinal misplacement of boards and still allow for the required expansion and contraction.



Pointed joist leg interlocks perfectly with wedges for a very easy and accurate levelling.



Using the magnet tool, any board can be opened up in less than 5 seconds

EXTERPARK TECH WPC RANGE

-exterpark **TECH** even



EXTERPARK TECH ROCK
SOLID 20MM

Smooth or Grooved surfaces



EXTERPARK TECH CHOICE
HOLLOW 22MM

6 even colours

3 profiles



EXTERPARK TECH WALL
SOLID 13MM

-exterpark **TECH CUBE(3)** shield



Nieve

Antique

Arce

Teka

Ipe

EXTERPARK TECH CUBE HOLLOW 22MM

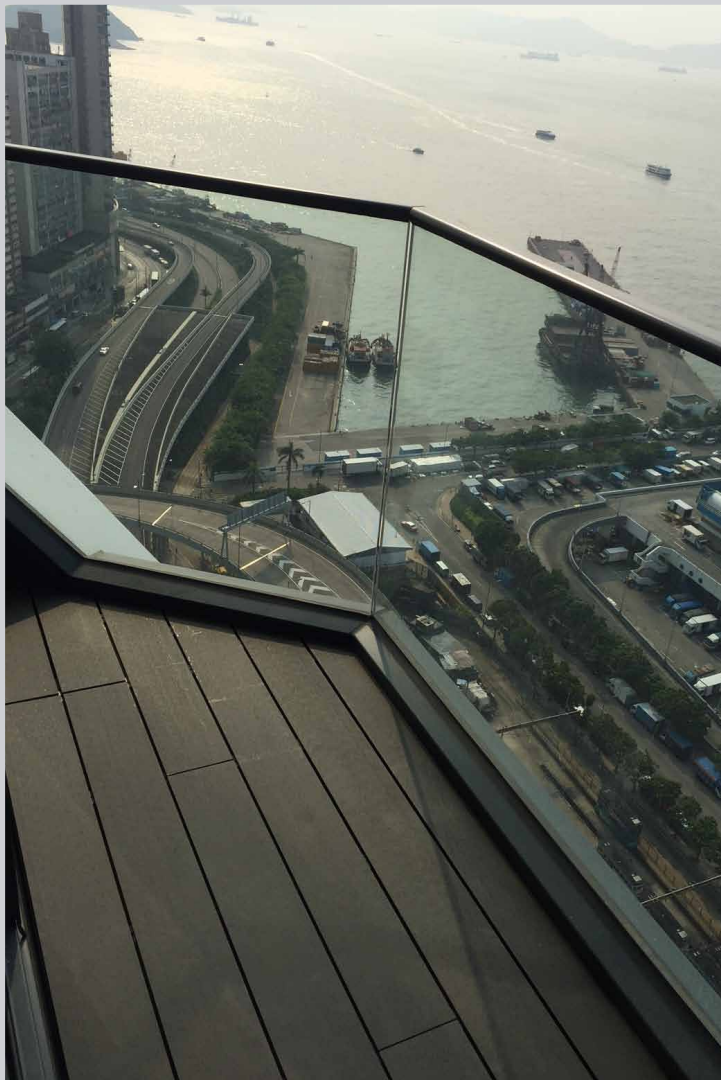
EXTERPARK TECH SHIELD SOLID 22MM



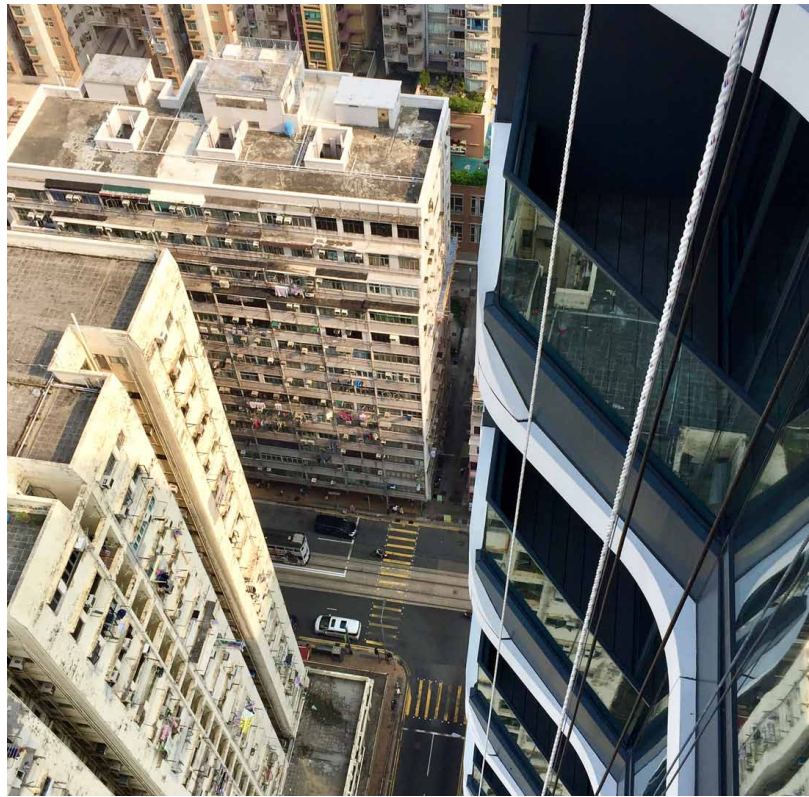
Anti-stain Shield capped surface.

5 premium colours with wood texture

The first combo WPC designed to fit with SpeedClip and Magnet systems.



RESIDENTIAL DEVELOPMENT
HONG KONG
EXT.TECH ANTRACITA

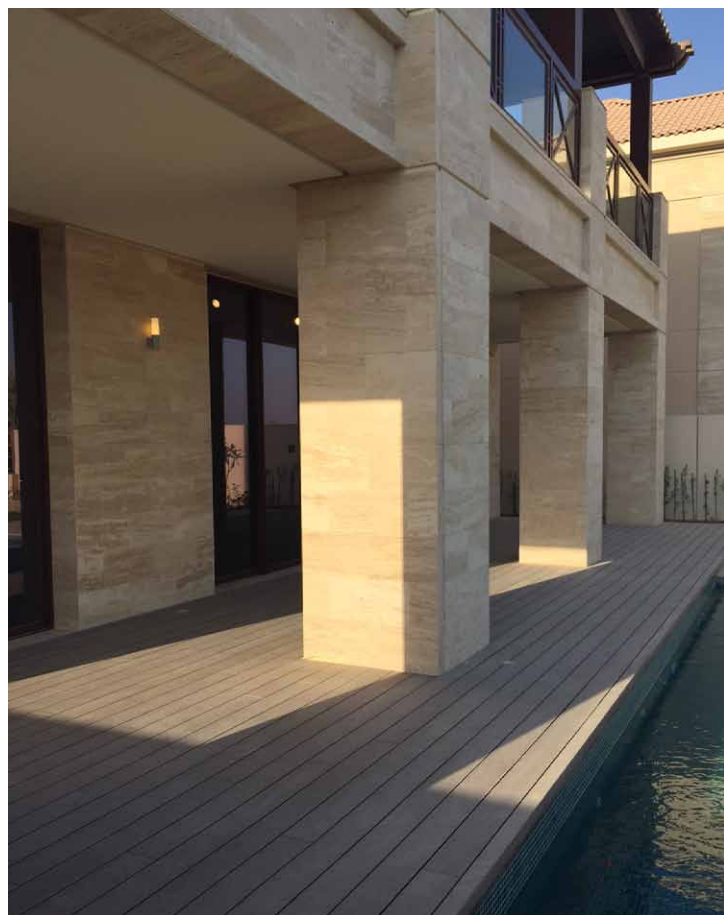


LA CRÉOLE BEACH HÔTEL & SPA, ANTILLES
EXTERPARK TECH CUBE TEKA

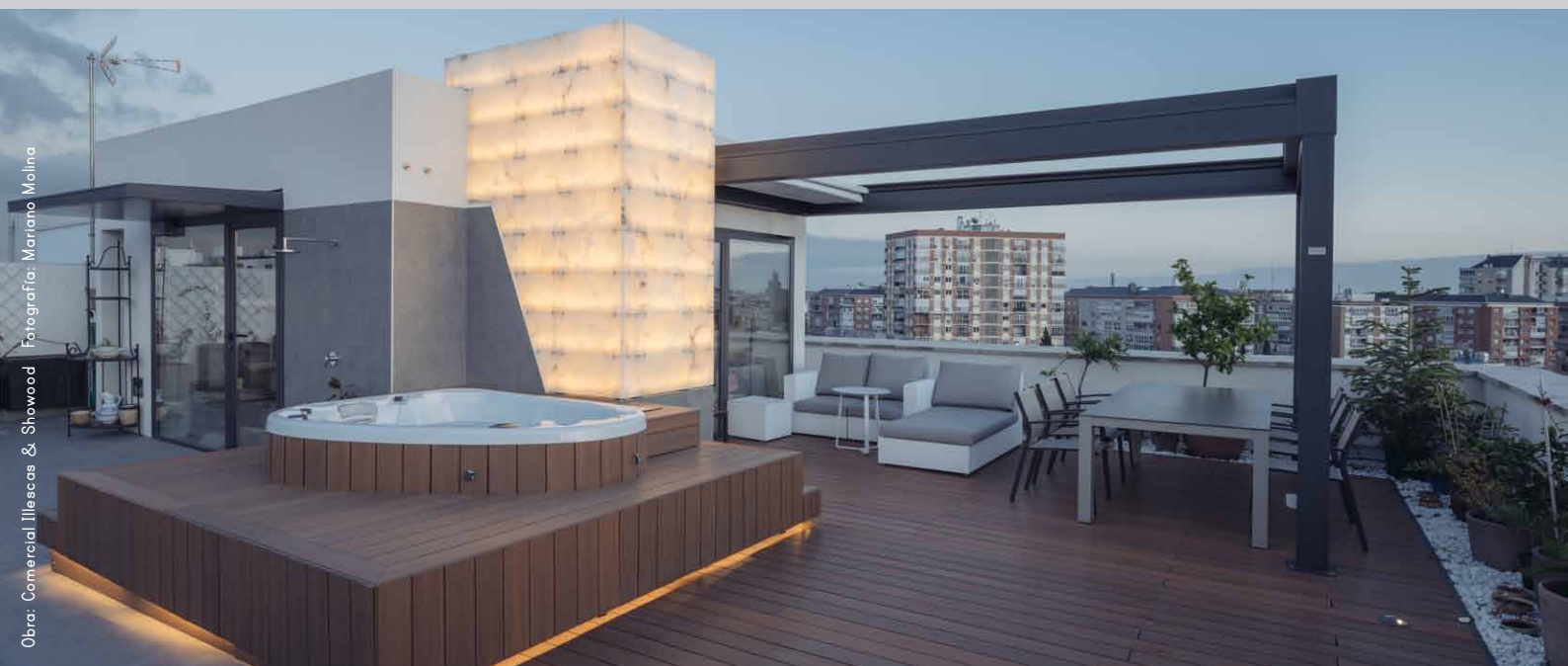




RESIDENTIAL, ABU DHABI
EXTERPARK TECH
TIERRA
30,000 m2



RESIDENTIAL, SPAIN
EXTERPARK TECH CUBE IPE

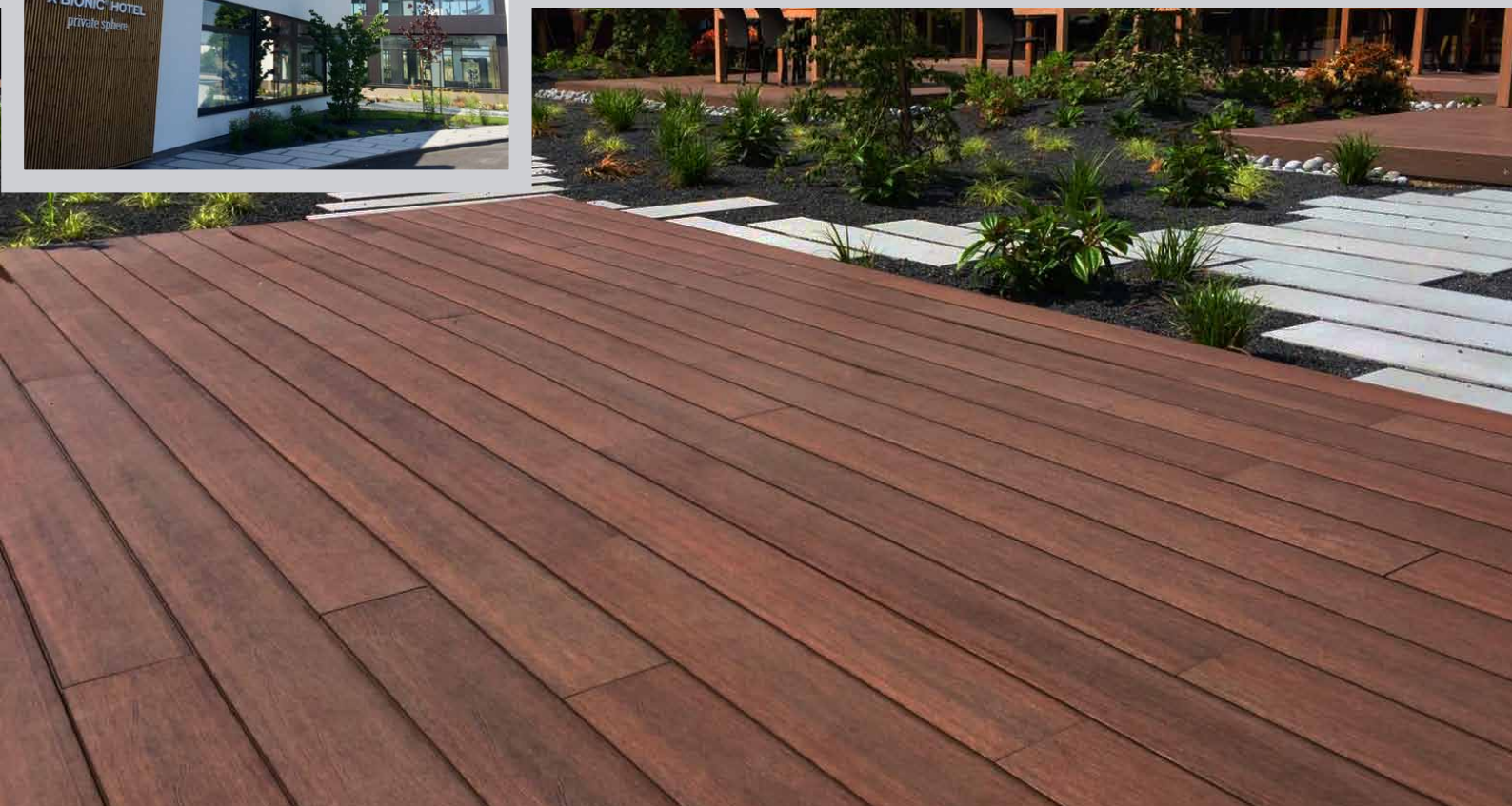




X-BIONIC HOTEL, SLOVAKIA

EXTERPARK TECH CUBE IPE

2,500 m²



RESIDENTIAL, THE NETHERLANDS

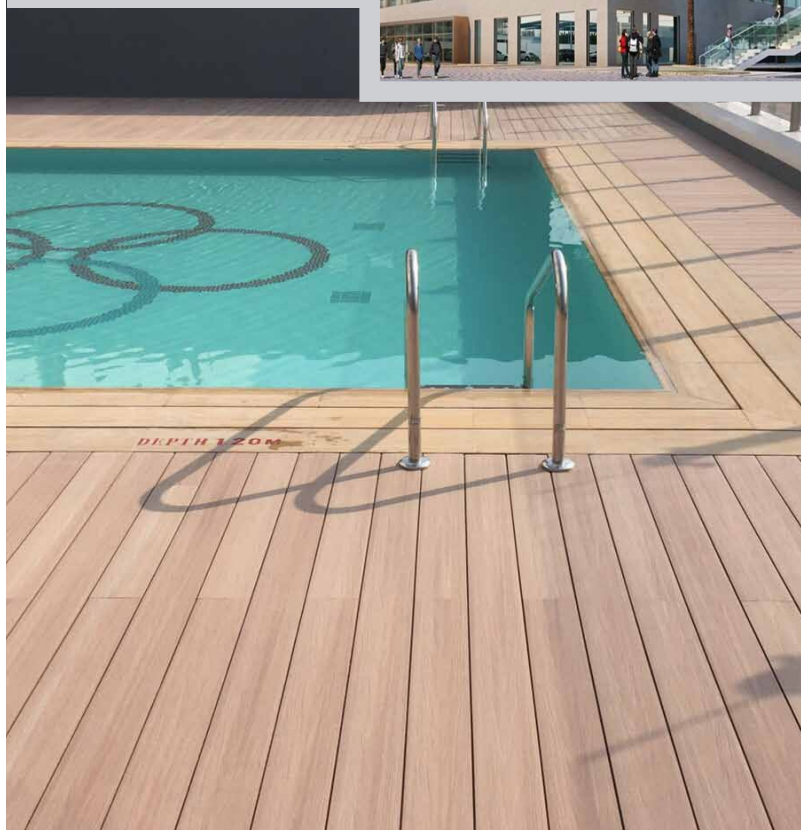
EXTERPARK TECH CUBE IPE



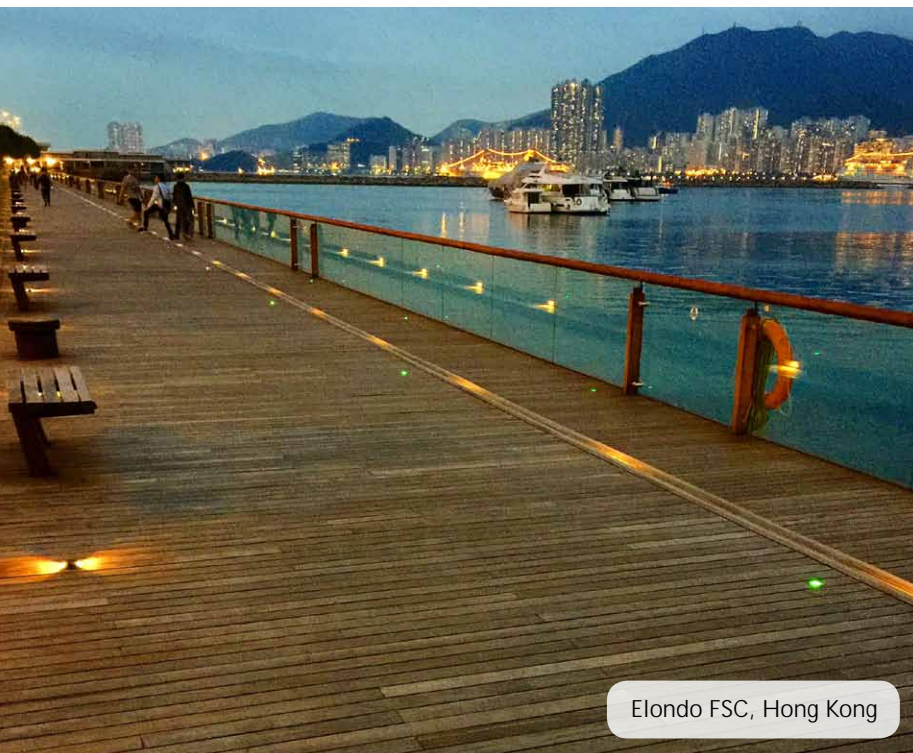
SWISS INT. SCIENTIFIC SCHOOL, DUBAI

EXTERPARK TECH CUBE ARCE

2000 m²



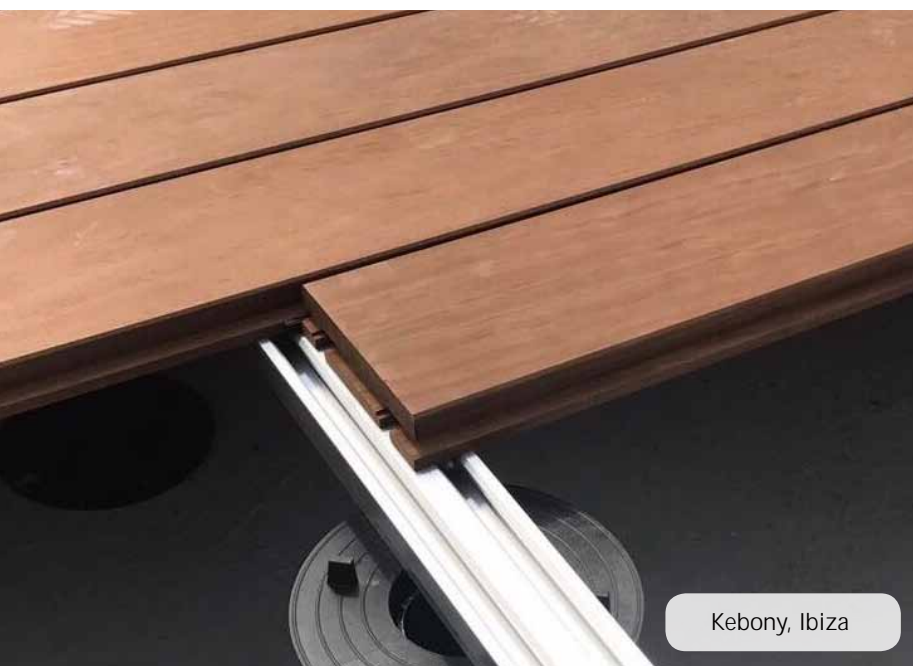
-exterpark



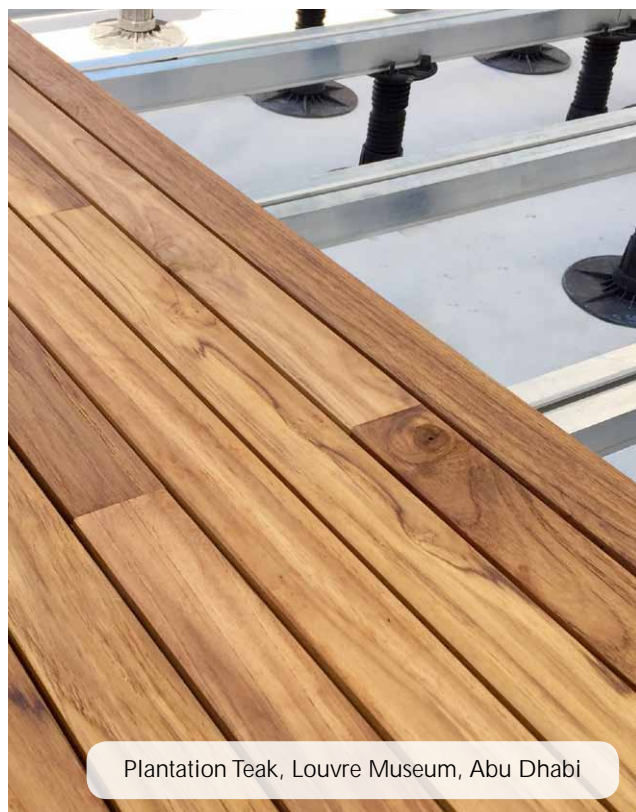
Elondo FSC, Hong Kong



Cumaru 35mm, Spain



Kebony, Ibiza

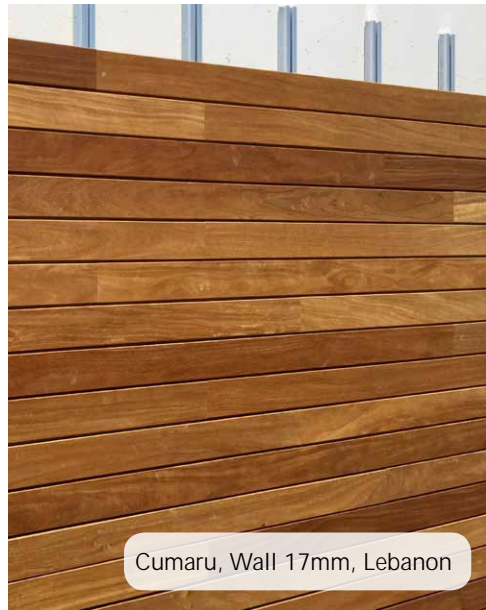


Plantation Teak, Louvre Museum, Abu Dhabi

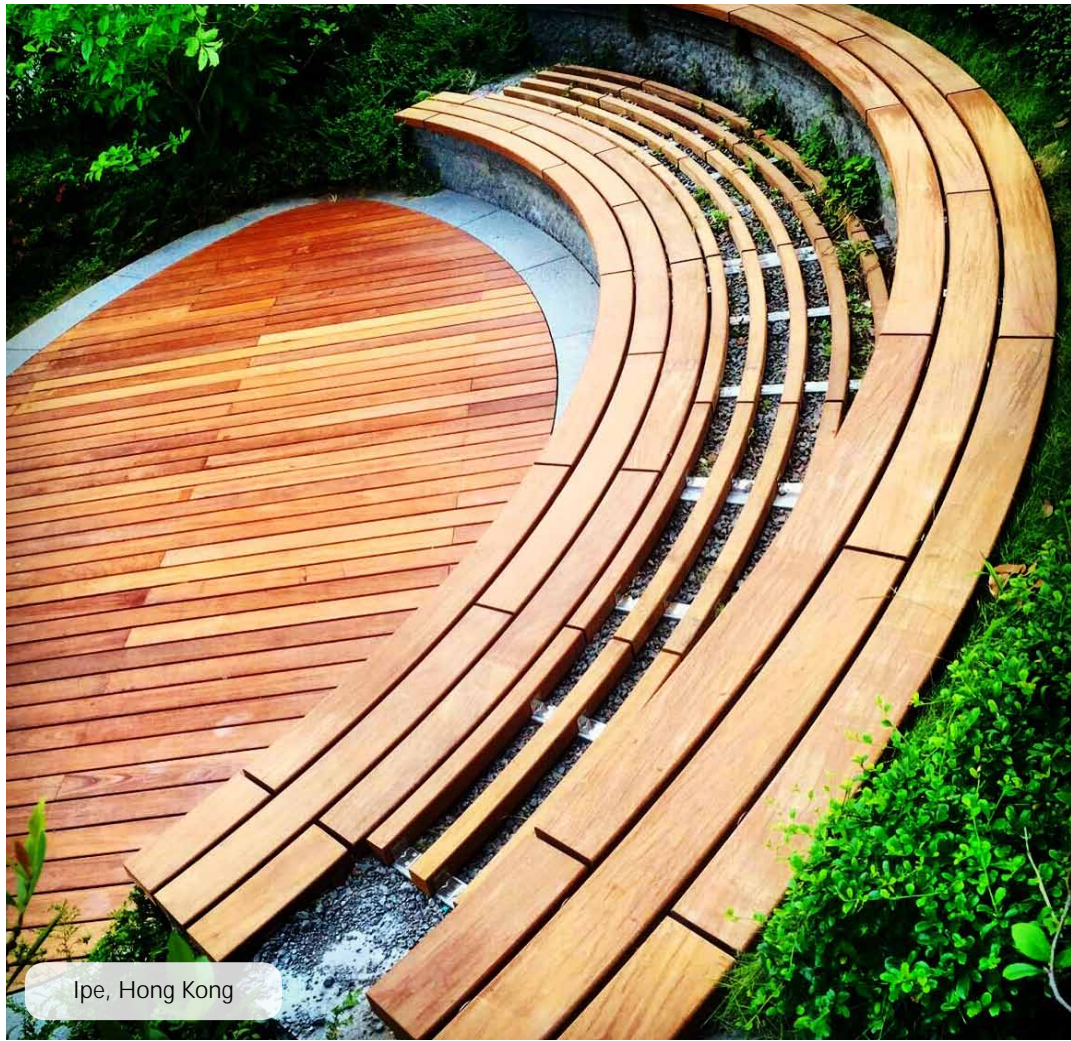
MORE Solid - Stable - Resistant - Durable

The new invisible profile combined with the magnet fixing at the bottom of the board gives us greater wear surface.

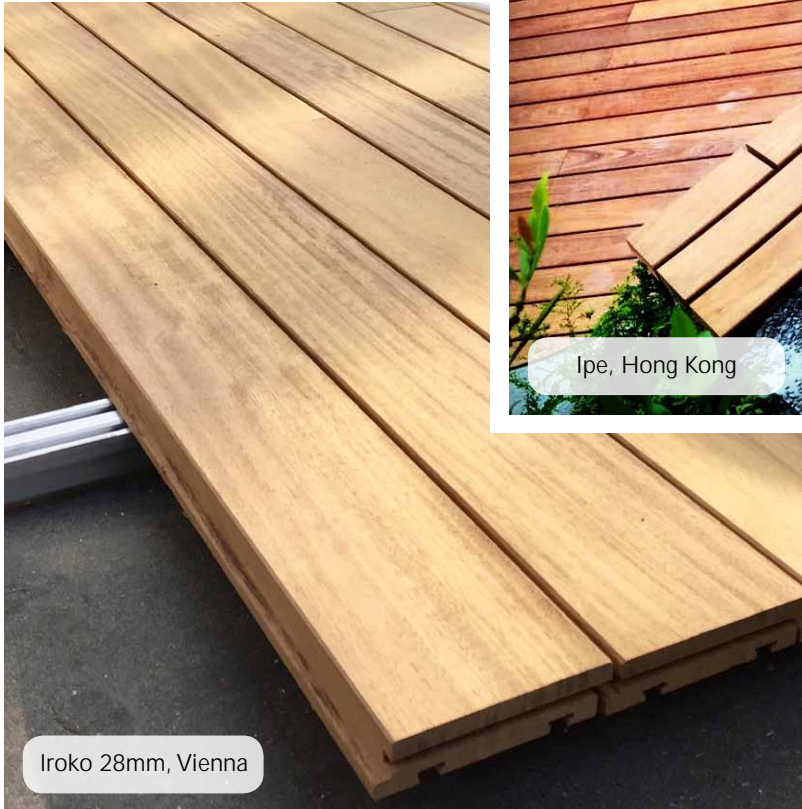
MAGNET WOOD



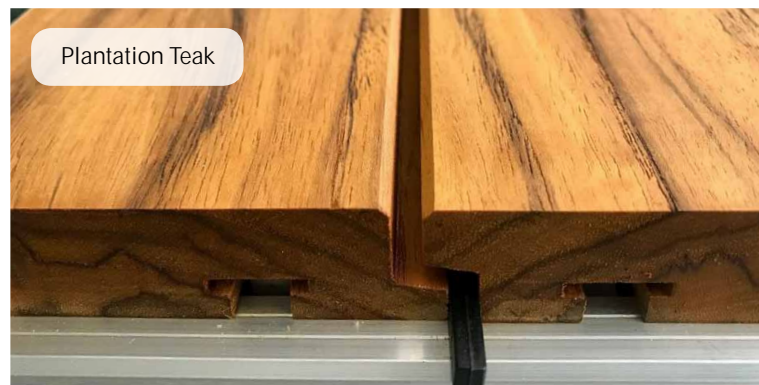
Cumaru, Wall 17mm, Lebanon



Ipe, Hong Kong



Iroko 28mm, Vienna



Plantation Teak

LOUVRE

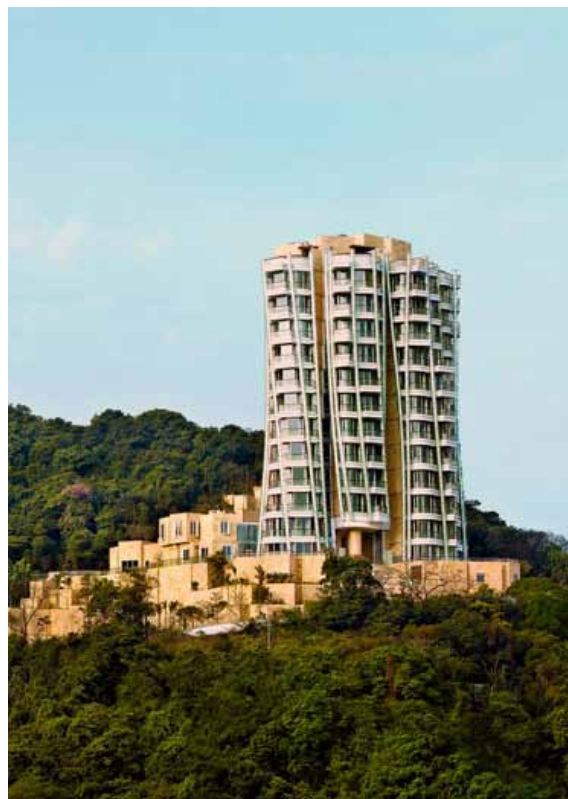
Atelier Jean Nouvelle and Exterpark
created together the new
magnet Louvre Teak deck design.

Elegant narrow boards of 57mm width with
a single magnet bottom groove.

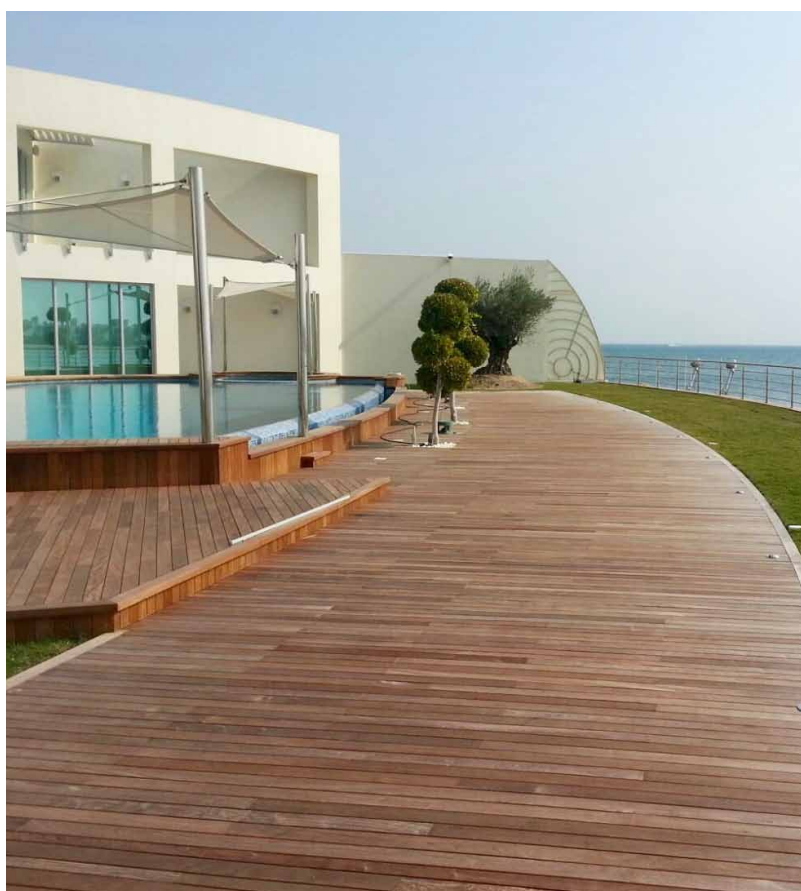




OPUS BUILDING BY FRANK GEHRY
HONG KONG
EXTERPARK PLUS TEAK
1,500 m²



RESIDENTIAL, BAHRAIN
EXTERPARK PLUS IPE 1,200 m²

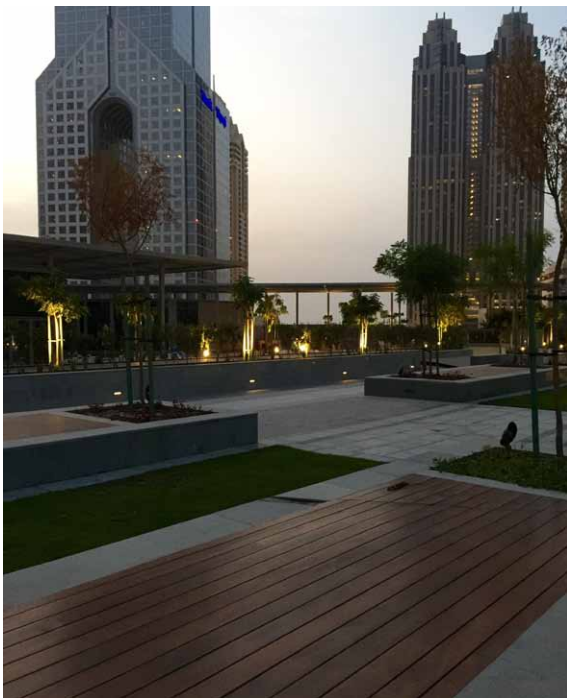




INT. FINANCIAL CENTRE
CENTRAL PARK

DUBAI

EXTERPARK PLUS IPE
1,400 m²



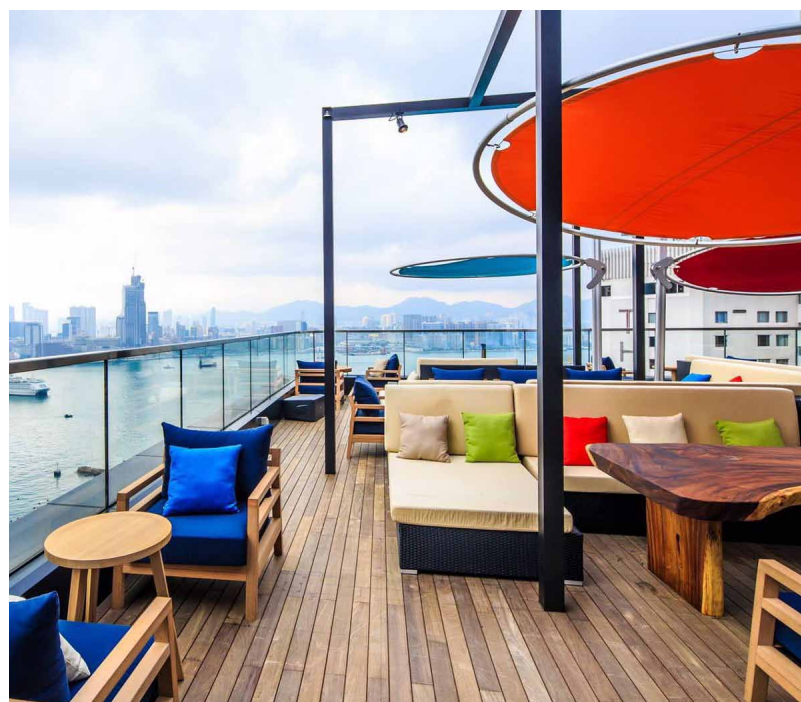
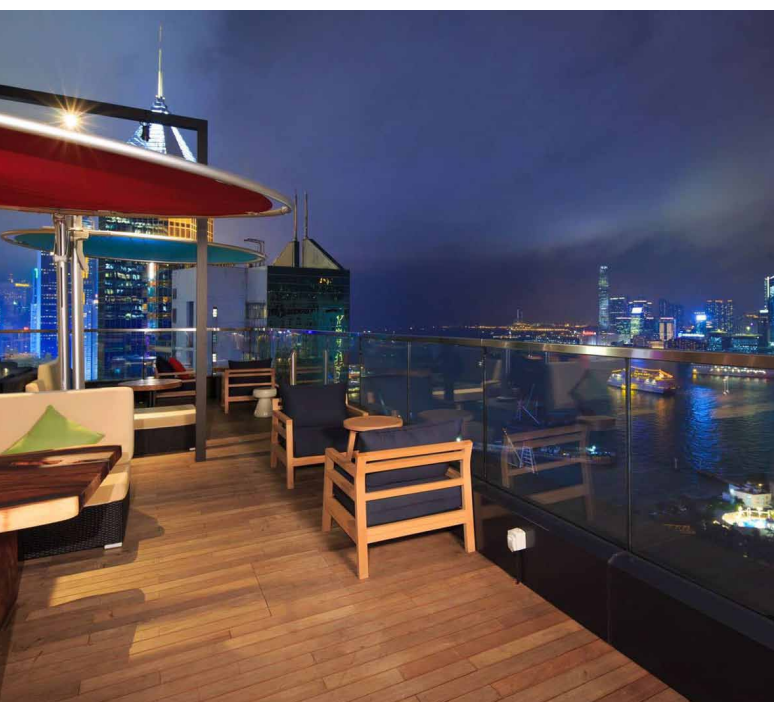


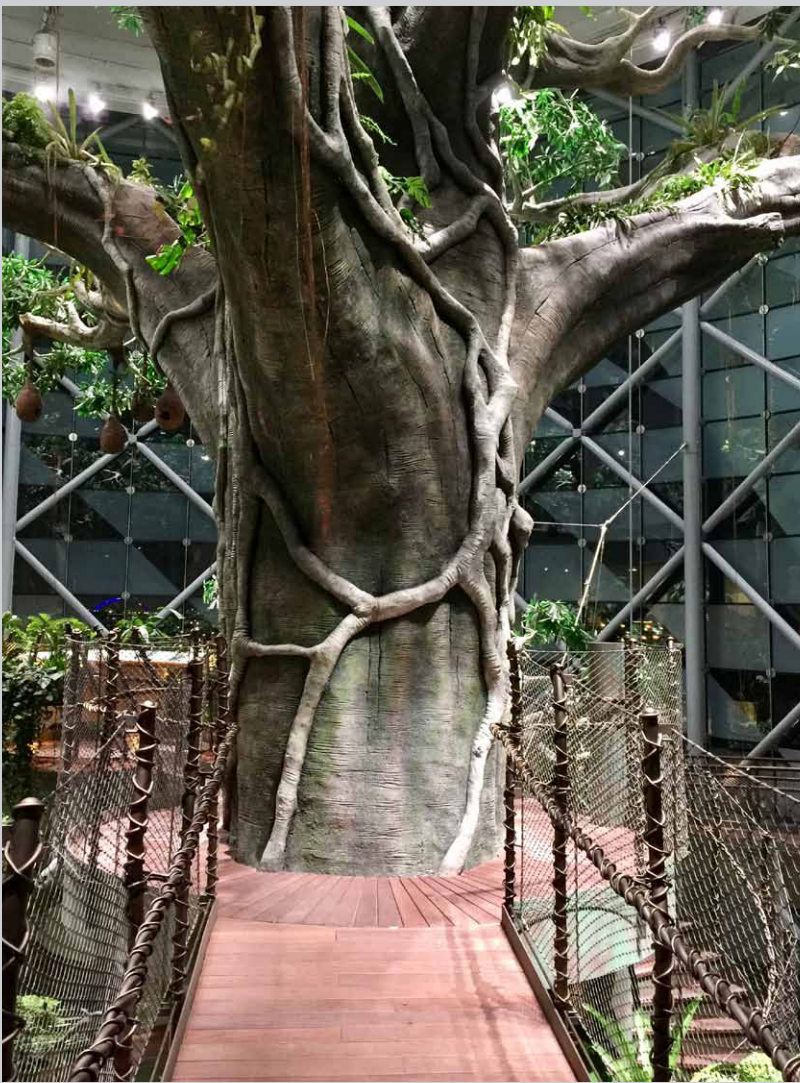
LOUNGE RESTAURANT

HONG KONG

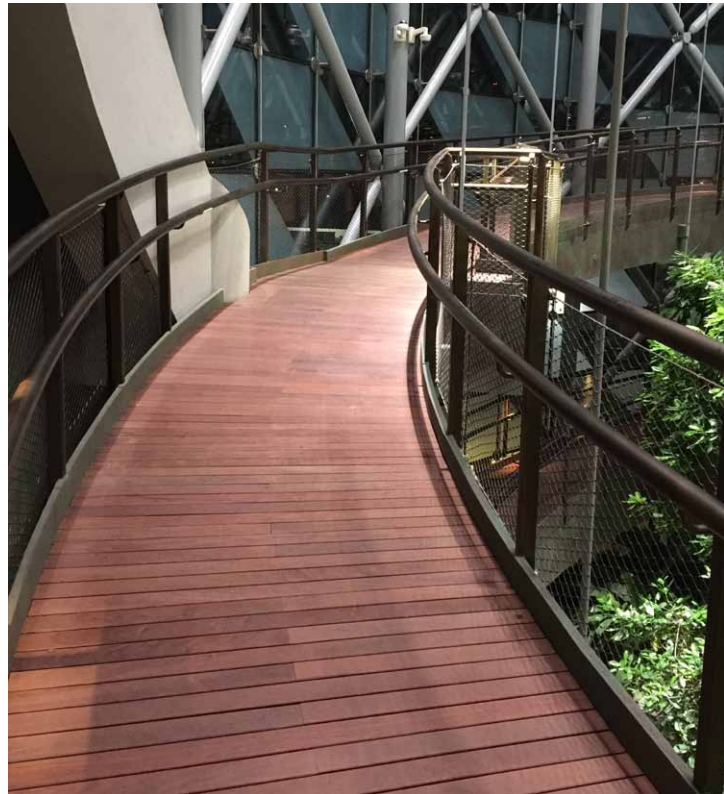
EXTERPARK PLUS IPE

600 m2

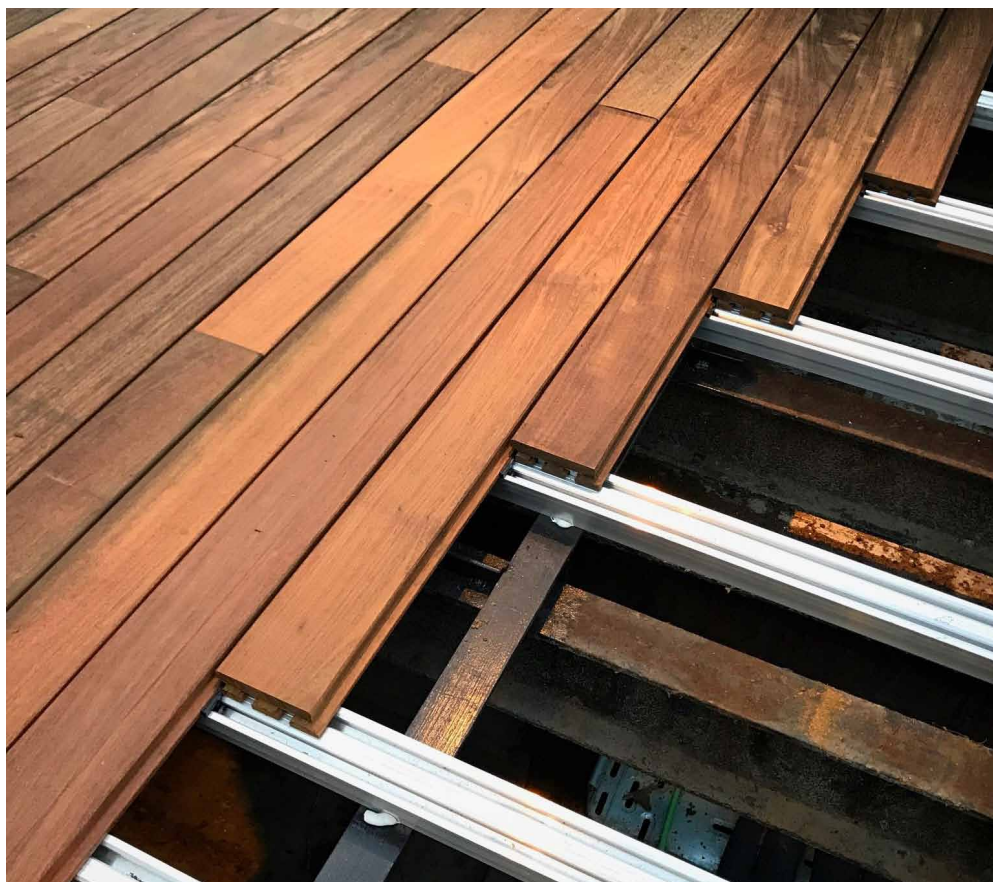




THE GREEN PLANET
BIODOME, DUBAI
EXTERPARK PLUS IPE



GRAND HOTEL CENTRAL, SPAIN
EXTERPARK MAGNET IPE





YVYRA

Rambla Solanes 38/40 | 08940 Cornellà de Llobregat | Barcelona, Spain
www.yvyra.es | www.exterpark.com | info@yvyra.es | + 34 93 508 65 80



exterpark_millesime